

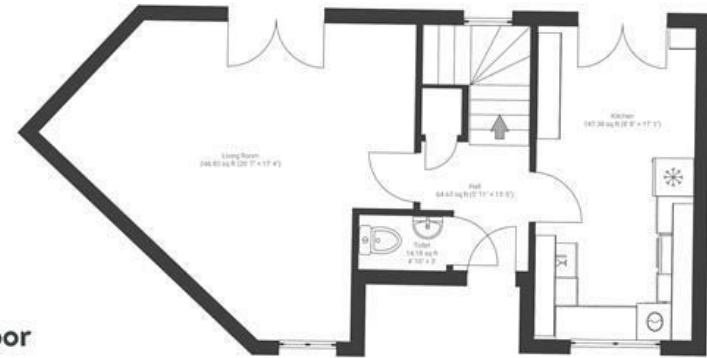
# Dirac Road

## ASHLEY DOWN

APPROXIMATE FLOOR AREA  
138.5 SQM / 1491 SQFT



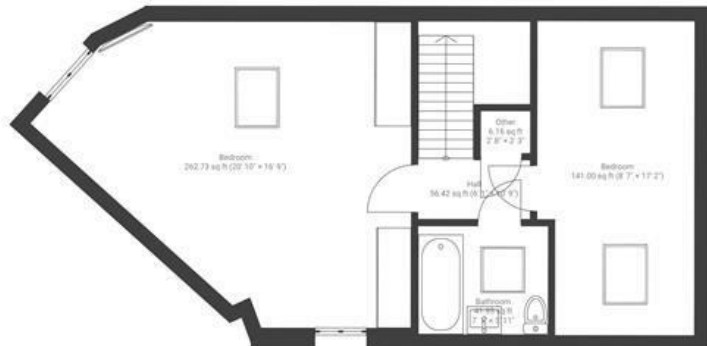
Ground Floor



1st Floor



2nd Floor



**Boardwalk**

# Dirac Road

ASHLEY DOWN, BRISTOL



£575,000



4 Bedrooms



Bristol, BS7  
91 P



3 Bathrooms

*"We love living in this quiet road that is positioned a short walk from Gloucester Road and St. Andrews Park. We have the convenience of local shops, pubs, restaurants and supermarkets, without any associated disturbances. The local primary and secondary schools are all excellent and the local area is comprised of young professionals and families, making it a very pleasant place to reside."*

